

A photograph of two men in a warehouse. The man on the left is wearing a white shirt and dark trousers, pointing towards the man on the right. The man on the right is wearing a blue shirt, glasses, and light-colored trousers, holding a clipboard and looking at it. They are standing in an aisle between tall metal shelving units filled with stacks of cardboard boxes. The background shows more of the warehouse structure and lighting.

**THE BEST  
SPACES ARE**

**VERSATILE**

**PRODUCT CATALOG**

**2020**

# WE STARTED WITH JUST 1 PRODUCT



In the beginning, Versatile developed a 3 step fiberglass non-skid coating designed to protect new and existing floors.

Several years later, Versatile introduced a newer version of the flooring with metal lathe cement to provide a stronger bond. This, in turn, prevented the fiberglass coating from cracking when applied over the flooring.

## THE EARLY 1990S

As Versatile began to grow, so did the staff that helped cultivate its culture. One such partner was a Technical director who took on the task of developing new products.

This is when the cementitious decorative concrete, known as Versa Crete, was created. The evolutionary changes that this product allowed gave contractors the ability to spray on pool deck coatings and trowel over many different types of designs previously put on concrete.



## LATE 1990S



Our research and development team spent over a year developing the Roll on Rock® 2 Step Garage Floor Coating line based on our 4195 Epoxy with "Wicking Technology."

By the beginning of the 2000s, Versatile began to lead the garage floor coating market due to the incredible success of two-component products developed like the polyurea 5073 which is a market leader clear topcoat.



## FREE SAME DAY SHIPPING

Versatile will pay freight within the continental USA for liquid orders over \$600 and cabinet orders over \$1200. This can amount to an additional "Out the Door Cost" savings of 20-30%..

## ADHESION WARRANTY

Due to Versatile's complete faith in their product, customers may be eligible to receive an Adhesion Warranty towards their Roll on Rock® system. This includes a 10-year warranty for installations inside residential homes. Additionally, Commercial/Industrial installations are eligible for a 3-year warranty.

## 200+ COLORS

With over 200+ options in consistently stocked colors, Versatile will always have what you need for your next job. From condo lobbies to retail showrooms, metallic or flaked epoxy flooring is an excellent way to give any concrete floor an attractive, durable, and long-lasting appearance.

## SUPPORT WHEN YOU NEED IT

Versatile customers will always have direct contact with the manufacturer to receive accurate technical and customer support when needed. Our support staff has years of experience which allow our customers the opportunity to get on-site help with any issues that may arise during installation.

## USER-FRIENDLY PRODUCT DESIGN

Since 1999, the Roll On Rock® 2-step flake system revolutionized the garage floor coatings industry. Easier to apply than common 4-step systems, Roll On Rock® uses a proprietary epoxy that "wicks" deep into concrete, creating a bond that is up to 3-times stronger than ordinary epoxy or polyaspartic systems.

## MULTIPLE WAREHOUSES

With the addition of our manufacturing/distribution plant in Dallas, Texas we will be able to provide 2-day priority shipping to 90% of the country. This also creates a redundant supply chain, ensuring that our customers can always get the products.



Garage Floor showing the 1 coat high build



Extreme high gloss provides a mirror like finish

# ROLL ON ROCK®

## EPOXY FLAKE & POLYASPARTIC FLOORING SYSTEM

In 1999, the Roll On Rock 2-step flake system revolutionized the garage floor coatings industry. Easier to apply than common 4-step systems, Roll On Rock uses a proprietary epoxy that “wicks” deep into concrete, creating a bond that is up to 3-times stronger than ordinary epoxy or polyaspartic systems. With Roll On Rock, your customers get a beautiful, easy to apply flooring system that will withstand at least 8 lbs. of MVE pressure, while others fail at 3lbs.

Advanced Roll On Rock technology allows a typical

### FEATURES AND ADVANTAGES:

- Unique wicking technology
- Hot tire resistant
- Ultra low VOC
- Tough and durable
- Easy to clean
- High MVE resistance

floor to be installed in 1 day – with accelerated formula 4195 Direct to Concrete Epoxy drying in just 3 hours. Our Polyurea topcoat delivers incredible gloss while providing extreme chemical and abrasion resistance, continuing to shine when others start to fade.

With 1 day installation and 3-times better adhesion to bare concrete, Roll On Rock transforms dull and dreary concrete floors into stunning, seamless masterpieces that will outshine other so-called comparable systems for years.

- Non yellowing
- Compliments any decor due to 200+ color options

### USES:

- Garage flooring
- Retail flooring
- Industrial flooring



Smooth mirror like finish



Each Lava Flow install is unique due to the pigment flow and installation method

# 4750 LAVA FLOW®

## DECORATIVE METALLIC EPOXY FLOORING SYSTEM

4750 Lava Flow® Epoxy is a 100% solids epoxy that is used in conjunction with the Lava Flow Packs for a decorative metallic epoxy flooring. This metallic flooring provides a very unique floor finish that has a uniform color shift and movement that can be modified by the installer. The 4750 Lava Flow® Epoxy is designed to be an easy to install product that can offer very similar results each time it is applied. It also exhibits great chemical and wear resistance. This can be used as a stand-alone metallic epoxy flooring sealer

### FEATURES AND ADVANTAGES:

- 100% solids
- Low VOC
- Low odor
- High gloss
- Good resistance to most chemicals

and does not require a separate topcoat. However, an additional topcoat may be applied if desired to protect it from scuffing, walk-off patterns, or to increase UV resistance for a long-lasting finish.

### USES:

- Garage floors
- Decorative concrete floors
- Commercial floors
- Retail floors



Self priming epoxy resulting in a monolithic finish



Low odor and plenty of open time for installation

# 4195 EPOXY

## DIRECT TO CONCRETE EPOXY PRIMER

\$75.18 GAL

Versatile Building Products 4195 is a low VOC 95% solids epoxy pigmented "Direct to Concrete Epoxy" designed to eliminate moisture vapor emissions and provide a good base to broadcast acrylic flakes into. Due to the "Wicking Technology", 4195 eliminates the need for a separate primer, allowing the installer to broadcast media directly into the first coat. 4195 develops incredible bond strength to concrete, even under cool, damp conditions.

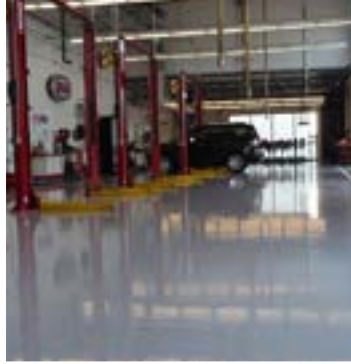
### FEATURES AND ADVANTAGES:

- Bonds to damp surfaces
- Cools under cool wet conditions
- 95% solids
- 30 VOC
- Low Odor
- Can be accelerated for low temperatures or allowing for 1 day installs

4195 is typically used as the primer/body coat for the Roll on Rock® System. It may also be used as a vapor reduction and odor barrier beneath carpet, VCT, and ceramic tile. 4195 may also be used as a standalone sealer over concrete.

### USES:

- Garage floors
- Industrial floors
- Previously Coated Floors
- Any concrete floor



Industrial epoxy flooring  
used on stadium floor



Ideally suited for work areas

# 4800 EPOXY

## 100% SOLIDS EPOXY FLOOR COATING

\$63.68 TO \$77.14 GAL

4800 Epoxy Colorseal, Clearseal, Low Yellowing and HD are a 100% solids industrial floor epoxy used in floor coating systems. The 4800 series was explicitly designed for applications that call for high strength, gloss, abrasion, and chemical resistance. The ultra-low odor of the system, due to its solvent-free nature, allows it to be applied without disabling surrounding operations during application and cure. Additionally, the low viscosity of the system allows the sealer to be applied easily by roller, brush, or squeegee from a thin 2 mils to

125 mils (1/8") for resurfacing applications. 4800 (clear) is also available in a Non-Yellowing formula that resists yellowing longer than the standard formula. We also offer an HD B component that has lower mixed viscosity when compared to the standard 4800 B component and allows for easier application and faster drying time.

### FEATURES AND ADVANTAGES:

- 100% solids
- 8 Standard colors
- Low odor
- Low yellowing option
- High gloss
- Good resistance to most chemicals

### USES:

- Industrial floors
- Commercial floors
- Any concrete floor
- Most previously coated floors - consult with manufacturer



Extra vapor blocking protection for industrial applications



Used on a garage floor that had high moisture vapor emission readings

# 4100 & 4150 VAPOR-STOP

## MOISTURE BLOCKING EPOXY PRIMER & SEALER

\$73.14 & \$88.36 GAL

4100 is a 100% solids & 4150 is a 98%-solids pigmented epoxy primer/sealer designed to wick deep into concrete floors to mitigate moisture vapor emissions, odor and increase the adhesion of subsequently applied systems. They develop strong bond strength to concrete floor surfaces, even under cool, wet or damp conditions. 4100 & 4150 are typically used as a primer for Versatile's Solid X® commercial and industrial flooring systems including High Build Epoxy, Epoxy Slurry, Epoxy Mortar, Urethane Cement and other two-

### FEATURES AND ADVANTAGES:

- Bonds to damp concrete floor surfaces
- Cures under cool conditions
- 98/100% Solids, 28/02 g/L VOC
- Low odor
- 4 Standard colors & clear
- 4100 May be used as a "Wet Look" Sealer

component floor coating systems. They may also be used as a vapor reduction and odor barrier beneath carpet, VCT, and ceramic tile. 4150 can be used to produce slurries and mortars for patching and repairing substrates. 4100 & 4150 can be used as a standalone sealer over concrete floor surfaces.

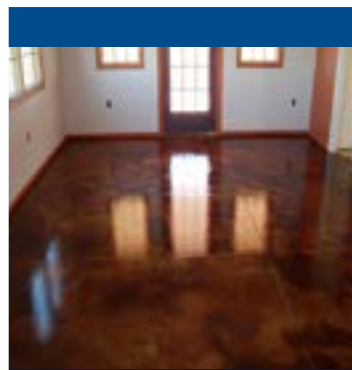
### USES:

- Commercial floors
- Industrial floors
- Garage floors
- Most previously coated flooring - consult with manufacturer





Waterbased epoxy providing a tough wet look seal



2 coats over a smooth surface leaves a high gloss finish

# 4001 WET LOOK EPOXY

## CLEAR SEAL WATERBORNE EPOXY

\$49.97 GAL

4001 is a 2-component Waterborne Epoxy Floor Primer/Sealer designed to improve the adhesion of coating systems to concrete and previously sealed surfaces or provide a breathable "Wet Look" seal over new, old or decoratively stained concrete floor surfaces and overlays. Due to its unique ability to "breathe", 4001 is suitable for use over green concrete, and substrates with high moisture vapor emissions. Use 4001 as your general-purpose sealer over bare concrete, feather blasted concrete or acid/acrylic stained

floors. 4001 can also be used as a primer coat for subsequent coats that are applied over it during the cure.

### FEATURES AND ADVANTAGES:

- Bonds to damp concrete floor surfaces
- Cures under cool or wet conditions
- 26% Solids, 22g/L VOC
- Ideal as a "Wet Look" Sealer over concrete
- Makes a great primer when applying subsequent materials that have lower adhesion properties
- Ideal as a "Wet Look" Sealer over concrete

### USES:

- Garage floors
- Retail floors
- Commercial floors
- Residential floors
- Any concrete floor



Pigmented waterbased epoxy with similar results to a solvent based epoxy



Ideal for use in areas where local recoats can be done by in house staff

# 4010

## PIGMENTED WATERBORNE EPOXY SEALER

\$49.56 GAL

4010 is a low VOC waterborne pigmented epoxy sealer designed for use over concrete. The Waterborne Epoxy utilizes a cross-linking technology that allows it to breathe out moisture emissions found on high MVT slabs. 4010 Epoxy is used as a chip receiver coat as well as a final coat for monolithic floors. Due to its waterborne technology, the epoxy Color Seal is very user-friendly and can be used in most areas. 4010 Pigmented Epoxy will provide the look and much of the performance typically found in 100% solids

### FEATURES AND ADVANTAGES:

- Low odor waterbased epoxy
- Use as a standalone pigmented epoxy floor sealer
- MVE tolerant
- Provides a solid color sealed finish to concrete floors
- Bonds to damp concrete floor surfaces
- Great resistance to most chemicals

Concrete Floor Epoxy Coating System while also remaining a breathable low odor Epoxy Flooring.

### USES:

- Garage floors
- Retail floors
- Industrial floors
- Previously coated floors



Polyaspartic UV resistance allows it for exterior use



Pigmented polyaspartic as a final topcoat

# 5108 & 5018 POLYASPARTIC

## FAST DRYING GLOSS & MATTE CLEAR TOPCOAT

\$107.77 & \$127.42GAL

Polyaspartic 5108 & 5018 are fast drying Polyaspartic Topcoats designed for use over concrete industrial, commercial, garage floor coatings and a wide range of other concrete floor coatings and stains. Polyaspartic 5108 provides a High Solids Gloss while 5018 provides a low Sheen Matte Finish. Both products have a lower viscosity that makes them very easy to apply while providing an even longer pot life and a faster cure when applied out onto the surface. The cross linking of the film in the cure makes it exceptionally tough and durable, making it more abrasion

resistant than most epoxy topcoats. As a result, these Polyaspartics are extremely user friendly without having sacrificed the performance of the finished product. The applications for these products are almost limitless. 5108 is suited for use on high end residential applications, retail settings with high traffic or food service areas where stain resistance and clean ability are important. 5018 is suited for areas that require a natural matte finish.

### FEATURES AND ADVANTAGES:

- Dries Quick
- 4 X more abrasion resistant than epoxy
- 72% Solids
- Low VOC
- High gloss
- High build
- Great resistance to most chemicals

- Non Yellowing
- Will cure at temperatures just above freezing

### USES:

- Garage floors
- Retail floors
- Industrial floors
- Any concrete floor



High build finish in only 1 coat



1 coat provides a mirror like finish

# 5085 & SD POLYASPARTIC

## ULTRA HIGH SOLIDS POLYASPARTIC TOPCOAT

\$115.56 & \$120.28 GAL

5085 Polyaspartic, an Ultra High Solids 2 Component Polyaspartic designed for easier application with fast dry times while the SD formulation is designed to be slower for hot humid conditions. The 5085 High-Performance Polyaspartic Flooring was developed for Floor Coating Installers and Contractors that might be a little hesitant about the working time of Polyaspartics due to their reputation of having rapid cure times. As part of the development process, 5085 was tested in real-world conditions by experienced installers across the United

States of America. These long-time customers of Versatile Building Products reported real-world working times of 35-50 minutes in temperatures ranging up to 88 degrees with 61% humidity. This testing has shown that the 5085 Polyaspartic Concrete Floor Coating provides superior pot life and working time when compared to traditional Polyaspartic Concrete Floor Sealers without giving up much of the early cure time that Polyaspartics are known for (walk-on time has been reported to be in as few as 2 hours).

### FEATURES AND ADVANTAGES:

- High build - 85% solids
- Under 50 g/L VOC
- Low odor
- Available in SD slow dry version
- High gloss
- Good resistance to most chemicals

- Non Yellowing
- Will cure at temperatures just above freezing

### USES:

- Garage floors
- Retail floors
- Industrial floors
- Commercial floors



Ultra low odor due to minimal solvents



Plenty of working time for a high solids polyaspartic

# 5100 & 5097 POLYASPARTIC

**100-97% SOLIDS POLYASPARTIC CONCRETE FLOOR COATING**

**\$124.42 & \$120.59 GAL**

5100 & 5097 are fast-drying high Solids Polyaspartic Topcoats designed for use over industrial, commercial and garage floors. The high solids allows film thickness to build in excess of standard systems with water clarity and mirror-like smoothness and gloss. These products have a much lower viscosity than a typical 100% solids Polyaspartic while providing a longer pot-life and working-time making it very easy to apply when compared with traditional 97+% solids systems. These products have longer potlife and working times, making it easier to apply

## FEATURES AND ADVANTAGES:

- High build - 100% solids
- 0 g/L VOC
- Low odor
- Non-flammable
- Good resistance to most chemicals

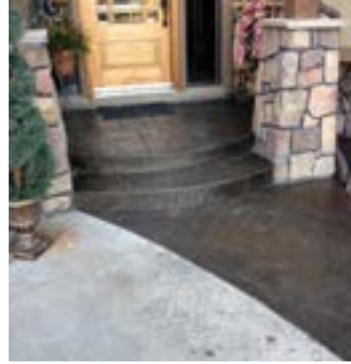
than traditional 97+% Solids Polyaspartics. They are nonflammable and have a very mild solvent-free odor that is suitable for working in environments that requires solvent-free products.

No additional solvent has been introduced into the these high solids Polyaspartics, making them ideal for installations and for installers who want to reduce the amount of solvent odor in their working space. Recent improvements have allowed us to increase the open time making these higher solids products easier to apply.

- Non-Yellowing
- Will cure at temperatures just above freezing

## USES:

- Garage floors
- Retail floors
- Industrial floors
- Commercial floors



Thin hybrid polyurea provides an easy to apply high performance topcoat



2 coats provides a mirror like finish over a smooth surface

# 5205 POLYUREA

## ULTRA FAST DRYING TOUGH CLEAR COAT

\$114.04 GAL

5205 Hybrid Fast Primer/Clear Seal is a very fast drying clear Polyurea sealer designed for use over concrete floors. It is also well suited as the first thin coat over a flaked garage floor as it will allow the applicator to apply the second clear topcoat in 20 minutes, providing a higher build floor with minimal downtime. This unique technology allows for more than an hour of pot-life, yet the material dries in as little as 20 minutes when applied to the floor. When used as a clear concrete sealer, 5205 has water clarity and mirror-like finish and gloss. 5205 also has a lower viscosity that makes

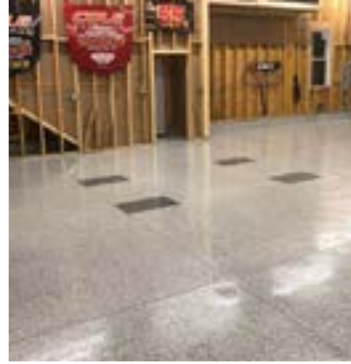
### FEATURES AND ADVANTAGES:

- Medium builds - 66% solids
- 9 g/L VOC
- High gloss
- Good resistance to most chemicals
- Non yellowing
- Will cure at temperatures just above freezing

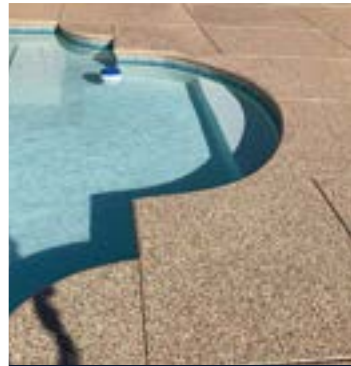
it very easy to apply while providing an even longer pot life and a faster cure when applied out onto the surface. The cross-linking of the 5205 series film in the cure makes it exceptionally tough and durable, maintaining its gloss far beyond that of comparable systems. The chemistry is based upon Polyurea and much attention has been given to the application characteristics in its formulation. As a result, Polyurea 5205 is extremely user-friendly without having to sacrifice the performance of the finished product. The applications for this product are almost limitless.

### USES:

- Industrial floors
- Commercial floors
- Garage floors
- Exterior surfaces
- Most previously coated floors - consult with manufacturer



Our original high performance polyurea with plenty of open time



Over a decade of use on interior and exterior surfaces

# 5073 POLYUREA

## FAST DRYING CLEAR TOPCOAT

\$118.05 GAL

Polyurea 5073 is a fast-drying Polyurea Topcoat designed for use over two component concrete floor coatings and a wide range of other concrete floor coatings and stains. Polyurea 5073 is 73% solids and allows film thickness to build in excess of standard systems with water clarity and mirror-like smoothness and gloss. 5073 has a lower viscosity that makes it very easy to apply while providing an even longer pot life and a faster cure when applied out onto the surface. The cross-linking of the 5073 series film in the cure makes it exceptionally tough and durable, maintaining its gloss far

beyond that of comparable systems. The chemistry is based upon Polyurea and much attention has been given to the application characteristics in its formulation. As a result, Polyurea 5073 is extremely user-friendly without having to sacrifice the performance of the finished product. The applications for this product are almost limitless. 5073 is suited for use on high-end residential applications, industrial, commercial, retail settings with high traffic or food service areas where stain resistance and cleanability are paramount.

### FEATURES AND ADVANTAGES:

- Fast drying
- 4 X more abrasion resistant than epoxy
- High solids
- Low VOC
- High gloss
- High build in one coat
- Great resistance to most chemicals

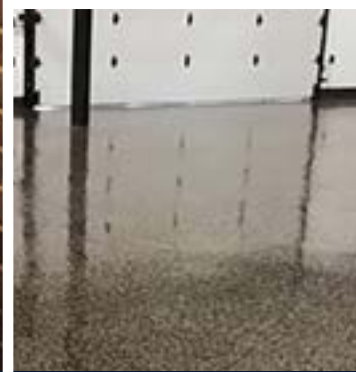
- Non Yellowing
- Will cure at temperatures just above freezing

### USES:

- Garage floors
- Retail floors
- Industrial floors
- Any concrete floor



Low VOC chemical resistant urethane



Provides a great gloss on industrial surfaces

# 5350 CRU

## 2 COMPONENT CHEMICAL RESISTANT URETHANE

\$104.87 GAL

5350 CRU is a durable 2 component Chemical Resistant Urethane Floor Coating that is used for industrial concrete floor coatings. 5325 CRU is formulated to have less than 50g/L VOC. The Chemical Resistant Urethane coating is used in and over Industrial Floor Areas that include Aircraft Hangars, Service Bays, Petroleum Refineries, Chemical Processing Plants, Wastewater Treatment Plants, Power Utilities, Pulp and Paper Plants, and Pharmaceutical Facilities. 5350 will provide great protection to Concrete Floors

### FEATURES AND ADVANTAGES:

- 60% Solids, <50 g/L VOC
- 45 Minute Pot Life
- Medium Build
- Skydrol Resistant
- High gloss
- Medium Build
- Good resistance to most chemicals

and Concrete Floor Coatings. 5350 offers great chemical resistance, excellent cleanability, and superior appearance for all types of Concrete Floors. 5350 can be used as a smooth, high-quality topcoat over most systems or as a standalone Floor Coating System for flatwork applications.

- Non Yellowing
- Will cure at temperatures just above freezing

### USES:

- Commercial floors
- Industrial floors
- Most previously coated flooring - consult with manufacturer





Our original chemical resistant urethane



Rated for an industrial and commercial flooring topcoat

# 5325 URETHANE

## CHEMICAL RESISTANT URETHANE FLOOR COATING

\$93.76 GAL

5325 CRU is a durable 2 component Chemical Resistant Urethane Floor Coating that is used for industrial concrete floor coatings. 5325 CRU is formulated to have less than 250g/L VOC. The Chemical Resistant Urethane coating is used in and over Industrial Floor Areas that include Aircraft Hangars, Service Bays, Petroleum Refineries, Chemical Processing Plants, Wastewater Treatment Plants, Power Utilities, Pulp and Paper Plants, and Pharmaceutical Facilities. 5325 will provide great protection to Concrete Floors

### FEATURES AND ADVANTAGES:

- 55% Solids, <250 g/L VOC
- 90 Minute Pot Life
- Extremely High Gloss
- Thin to Medium Build
- Great abrasion resistance
- Accelerators are Available
- Good resistance to most chemicals

and Concrete Floor Coatings. 5325 offers great chemical resistance, excellent cleanability, and superior appearance for all types of Concrete Floors. 5325 can be used as a smooth, high-quality topcoat over most systems or as a standalone Floor Coating System for flatwork applications.

- Non Yellowing
- Will cure at temperatures just above freezing

### USES:

- Retail floors
- Industrial floors
- Commercial floors



Suited for interior and exterior uses



Waterbased urethane makes it ideal for areas sensitive to solvent odor

# 5400 URETHANE

## 2K WATERBASED CHEMICAL RESISTANT URETHANE

\$88.32 GAL

5400 is a Clear Waterborne Chemical Resistant Urethane Concrete Floor Coating that exhibits excellent wear and U.V. Stability when installed over concrete floors found in garages or commercial areas. The film build, gloss and chemical resistance are comparable to solvent based systems, yet without the intense odor associated with them or the high V.O.C. levels. New technologies allow us to produce a waterborne product that is much higher in solids as well as attain thicker film build with

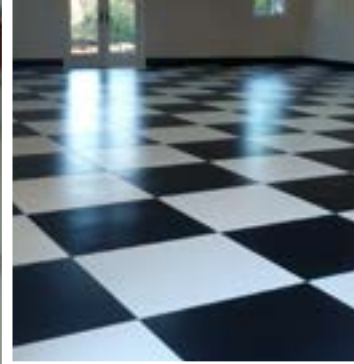
### FEATURES AND ADVANTAGES:

- Low Odor
- Non Flammable
- Very low V.O.C. content
- Outstanding Chemical Resistance
- Excellent Gloss Retention
- Stain Resistance
- U.V. Stable – Non-yellowing

no outgassing problems that its predecessors were notorious for. This allows the applicator to use the product during normal business hours where customers or neighboring tenants won't be disturbed by an offensive solvent odor, yet not sacrifice any of the physical properties we expect from the urethanes we are all so familiar with. 5400 is a very popular 2k Urethane Topcoat option for garage floor coatings.

### USES:

- Garage floors
- Retail floors
- Industrial floors
- Most previously coated flooring - consult with manufacturer



Pigmented version makes it ideal as a final topcoat



Works in commercial and residential applications

# 5410 URETHANE

## 2K WATERBASED PIGMENTED CHEMICAL RESISTANT URETHANE

\$100.50 GAL

5410 is a Pigmented Waterborne Chemical Resistant Urethane Floor Coating that exhibits excellent wear and U.V. Stability when installed over concrete floors found in garages or commercial areas. The film build, gloss, and chemical resistance are comparable to solvent-based systems, yet without the intense odor associated with them or the high V.O.C. levels. New technologies allow us to produce a water-based product that is much higher in solids as well as to attain thicker film build with no outgassing

### FEATURES AND ADVANTAGES:

- Low Odor
- Non Flammable
- Very low V.O.C. content
- Outstanding Chemical Resistance
- Excellent Gloss Retention
- Stain Resistance
- U.V. Stable – Non-yellowing

problems that its predecessors were notorious for. This allows the applicator to use the product during normal business hours where customers or neighboring tenants won't be disturbed by an offensive solvent odor, yet not sacrifice any of the physical properties we expect from the urethanes we are all so familiar with. 5410 is a very popular 2k Urethane Topcoat option for garage floor coatings

### USES:

- Garage floors
- Exterior floors
- Industrial floors
- Most previously coated flooring - consult with manufacturer



100% solids crack filler



Ideal for filling cracks that have been chased

# 4900 & 4905

## 100% SOLIDS EPOXY CRACK REPAIR

\$57.91/GL & \$74.55/GL

4900 Crack Weld is a 2 component 100% Solids Epoxy designed for bonding concrete back together within cracks. The ultra-low odor of the system and the solvent-free nature allows it to be applied without disabling surrounding operations during application and cure

4905 5-Min Crack Weld is a 2 component 100% Solids Epoxy designed for bonding concrete back together within minutes. The ultra-low odor of the system and the solvent-free nature allows it to be

### FEATURES AND ADVANTAGES:

- (4900) Slow Curing which helps it seep deeper into the Cracks and good working time.
- (4905) Fast Curing
- Low-odor formula
- Sold in pre-measured, two-component kits
- Incredible adhesion to concrete
- Excellent adhesion to concrete floors

applied without disabling surrounding operations during application and cure. This product is a must-have for installers who require a quicker turnaround time

### USES:

- Concrete crack and saw cut filler
- Relocating expansion joints



Fast drying semi rigid polyurea filler allows crack to move slightly after being coated



Pre-packaged in 600ml cartridge

# 4920

## SEMI RIGID POLYUREA FILLER

\$28.46/CARTRIDGE

Joints between concrete slabs are one of the most vulnerable areas in any concrete flooring installation. That's especially true when it comes to heavy-duty, industrial facilities with heavy machinery traffic. Without a proper concrete expansion joint filler, these joints are highly vulnerable to spalling, chipping, cracking, and stress when exposed to traffic from forklifts and other heavy vehicles.

4920 is a 100% solids Polyurea formulated for use as a semi-rigid joint filler. 4920 is made with a flexible polymer backbone, not a plasticizer, ensuring durable performance. 4920 is supplied in a 600ml Dual Cartridge tube to ensure the proper amounts are mixed through a static tip to get the proper blend for a fast setting semi rigid product.

### FEATURES AND ADVANTAGES:

- 100% Solids, Zero VOC
- Low Odor
- Fast Cure
- Fast Drying
- Sold in Pre-Measured Kits
- Good Resistance to Most Chemicals

### USES:

- 4920 is primarily used as a concrete joint filler to prevent spalling of concrete joints while allowing load transfer through the semi-rigid polymer backbone



Provides similar results to acid etch but without the same hazard



Opens up the concrete pours

# ECO CONCRETE PROFILER

## USER FRIENDLY CONCRETE ETCHER

\$24.08 GAL

Eco Concrete Profiler was specifically developed as a safe and environmentally friendly concrete profiler and cleaner. Unlike other heavy-duty concrete acid etchers, Eco Etch is completely safe to use, non-corrosive, and 100% biodegradable. Eco Concrete Profiler is a waterbased non-hazardous, non-corrosive, biodegradable concentrate concrete etch and cleaning solution. It is the ideal muriatic acid etch alternative. Our advanced formula incorporates a proprietary blend of surfactants, organic minerals for the

most effective concrete etching solution available. It does not contain phosphoric, hydrochloric or muriatic acid, yet works better and safer. Eco Concrete Profiler is the preferred Eco-friendly and user-friendly acid etching alternative for interior or exterior concrete surface preparation applications. It will not burn skin, corrode metals, or harm vegetation.

### FEATURES AND ADVANTAGES:

- Use Over New or Old Concrete
- Low Odor
- Easy to Apply
- Water Clean Up

### USES:

- Garage floors
- Retail floors
- Industrial floors
- Any concrete floor



Fast drying polymer modified concrete patch materials



Shrinkage compensated materials prevent shrinkage cracks

# CONCRETE PATCH MATERIAL

## NON SHRINK CONCRETE REPAIR MORTAR, FAST PATCH & DIVOT PATCH

\$31.03+SHIPPING, \$32.02 +SHIPPING & \$13.65 PER BAG

Metal Lath Cement, Divot Patch and Fast Patch are specially formulated blends of fast-setting, shrinkage compensated portland cement, additives, silica, and polymer, designed for easy trowel application to level, slope, and repair concrete floors, ramps, walkways, and stairs.

Use Metal Lath Cement to patch large defects, level uneven concrete, and slope for water drainage. Metal Lath Cement contains no coarse fillers, allowing it to be applied from a thin 1/32" to

1 1/2", and up to 3" with the addition of appropriate aggregate.

Use Fast Patch to patch smaller defects or when you want to have a smoother finish. Fast Patch utilizes a smaller size aggregate to allow for a smoother finish making it ideal for patching before applying a thin coating.

Use Divot Patch to patch smaller cracks and minor spalls up to 1" deep in one pass.

### FEATURES AND ADVANTAGES:

- No priming required over absorbent concrete
- Just add water mix reduces on-site errors
- Rapid hardening
- No curing required
- Adheres to most substrates
- Shrinkage compensated
- Easy workability

- Compatible with most sealers and cementitious toppings

### USES:

- Fix cracks/fractures
- Troweling low points on a concrete floor



# ENDLESS COMMERCIAL & INDUSTRIAL OPPORTUNITIES

*When you select a Versatile flooring system, you're choosing the toughest, most durable 2 component flooring in the business. And with a redundant supply chain through our facilities strategically located in Dallas and Los Angeles, we are able to deliver materials to you in a snap.*

---

Learn more about partnering with Versatile by calling **714. 829.2600**

Or visit our website at **[www.versatile.net](http://www.versatile.net)**

---



MADE IN USA ©2020 VERSATILE BUILDING PRODUCTS

*Some product images shown are for illustrative purposes only and may not be an exact representation of the product*